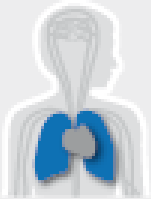
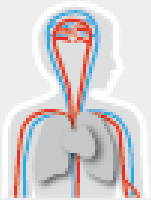


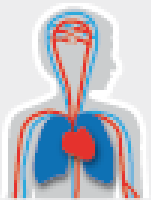
Heart Failure & Arrhythmias



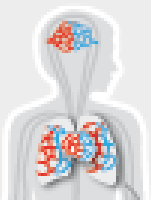
Pulmonary Hypertension
& Thrombosis



Atherosclerosis
& Ischemic Syndromes



Diabetes & Metabolism



Microcirculation

Angiogenesis Laboratory Amsterdam

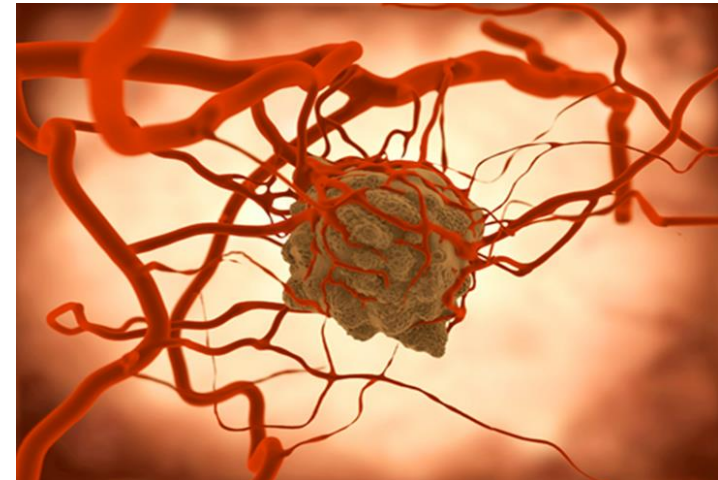


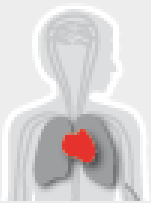
Name PI: Arjan Griffioen, Else Huijbers
Department, UMC: Medical Oncology, VUMC
Size of research group: 18

Current mission, vision and aims

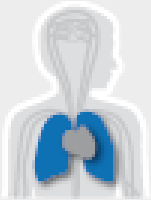
To unravel the fundamental processes and mechanisms underlying angiogenesis and vascular development. The major aim is to use new knowledge and technology for the development of new treatment modalities in the clinic.

Line I: Target and drug discovery
Line II: Cancer vaccines
Line III: Combination therapies
Line IV: Personalized treatment strategies

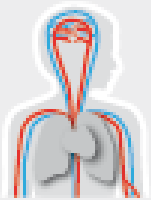




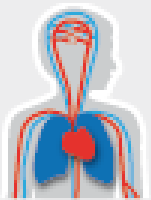
Heart Failure & Arrhythmias



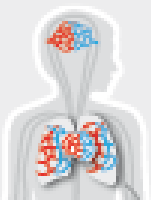
Pulmonary Hypertension & Thrombosis



Atherosclerosis & Ischemic Syndromes



Diabetes & Metabolism



Microcirculation

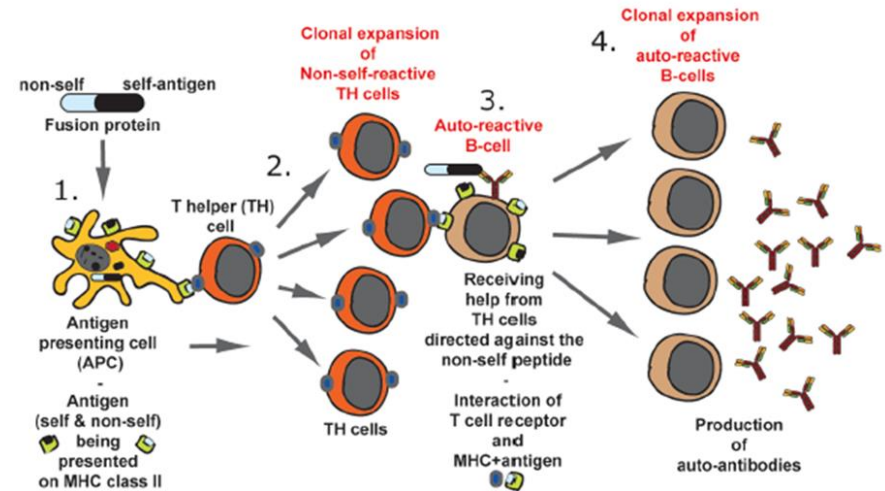
Focus of research group (II)

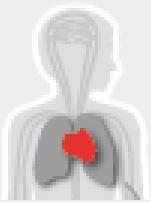
Current expertise

Target finding in the tumor vasculature
Vaccine & antibody development
In vitro/in vivo angiogenesis assays
Mouse tumor models

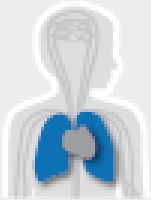
Current funding

KWF preventive vaccine	780.000 euro
KWF vimentin	450.000 euro
KWF magic combination	450.000 euro
KWF galectins	175.000 euro
Preseed grant government	200.000 euro

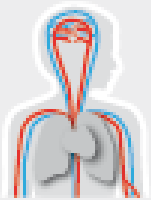




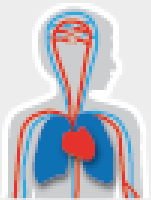
Heart Failure & Arrhythmias



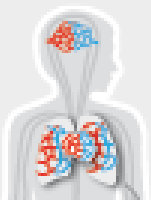
Pulmonary Hypertension
& Thrombosis



Atherosclerosis
& Ischemic Syndromes



Diabetes & Metabolism



Microcirculation

Future plans

Short term (1-2 year) plan

Plan: Development of 1. an angiostatic cancer vaccine, 2. a multi-targeted vaccination approach, 3. a preventive cancer vaccine, 4. an optimal vaccination combination therapy.

Necessary infrastructure: fluorescence microscopy, in vivo imaging, FACS sorter.

Long term (>2 year) plan

Plan: Vaccine development in advanced mouse models. Phase I clinical testing.

Necessary infrastructure: Animal facility, PET/MRI, phase I unit.

Plan: Further establish CimCure BV.

